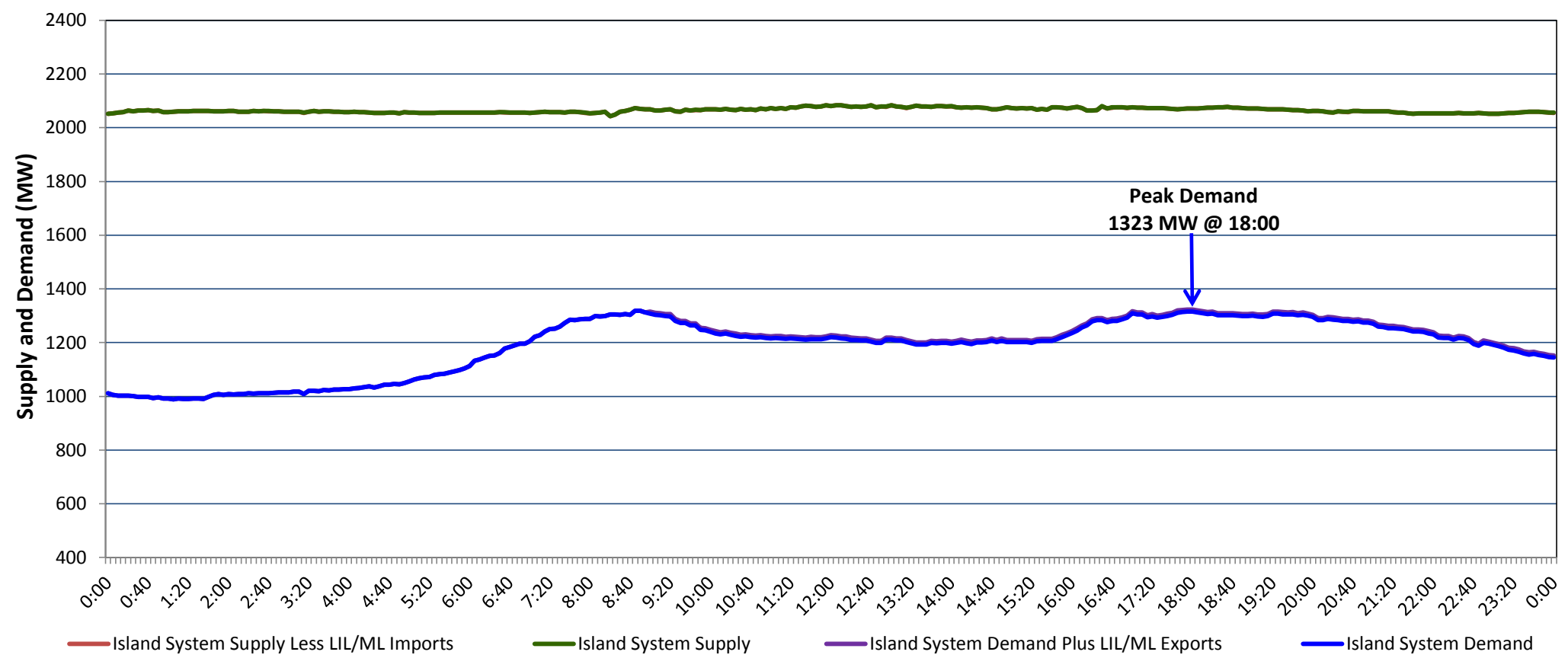


**Newfoundland Labrador Hydro (NLH)  
Supply and Demand Status Report Filed Friday, February 19, 2021**

**Section 1  
Island Interconnected System Supply, Demand & Exports  
Actual 24 Hour System Performance For Thursday, February 18, 2021**



**Supply Notes For February 18, 2021**

1,2

A At 0801 hours, February 18, 2021, St. Anthony Diesel Plant available at 7.7 MW (9.7 MW).

B At 1517 hours, February 18, 2021, St. Anthony Diesel Plant available at full capacity (9.7 MW).

**Section 2  
Island Interconnected Supply and Demand**

Fri, Feb 19, 2021	Island System Outlook <sup>3</sup>		Seven-Day Forecast	Temperature (°C)		Island System Daily Peak Demand (MW)	
				Morning	Evening	Forecast	Adjusted <sup>7</sup>
Available Island System Supply: <sup>5</sup>	2,030	MW	Friday, February 19, 2021	-8	-5	1,430	1,325
NLH Island Generation: <sup>4</sup>	1,695	MW	Saturday, February 20, 2021	-7	-5	1,395	1,291
NLH Island Power Purchases: <sup>6</sup>	105	MW	Sunday, February 21, 2021	-4	-10	1,480	1,375
Other Island Generation:	230	MW	Monday, February 22, 2021	-11	-5	1,530	1,424
ML/LIL Imports:	-	MW	Tuesday, February 23, 2021	-3	1	1,270	1,167
Current St. John's Temperature & Windchill:	-9 °C	-17 °C	Wednesday, February 24, 2021	1	-1	1,315	1,212
7-Day Island Peak Demand Forecast:	1,530	MW	Thursday, February 25, 2021	0	-1	1,230	1,128

**Supply Notes For February 19, 2021**

3

- Notes:
1. Generation outages for running and corrective maintenance are included. These are not unusual for power system operations. They generally do not impact customer supply. The power system operators schedule outages to system equipment whenever possible to coincide with periods when customer demands are low and sufficient supply reserves are available. However, from time to time equipment outages are necessary and reserves may be impacted.
  2. Due to the Island system having no synchronous connections to the larger North American grid, when there is a sudden loss of large generating units there may be a requirement for some customer's load to be interrupted for short periods to bring generation output equal to customer demand. This automatic action of power system protection, referred to as under frequency load shedding (UFLS), is necessary to ensure the integrity and reliability of system equipment. Under frequency events have typically occurred 5 to 8 times per year on the Island Interconnected System and the resultant customer load interruptions are generally less than 30 minutes. With the activation of the Maritime Link frequency controller during the winter of 2018, UFLS events have occurred less frequently.
  3. As of 0800 Hours.
  4. Gross output including station service at Holyrood (24.5 MW) and improved NLH hydraulic output due to water levels (35 MW).
  5. Gross output from all Island sources (including Note 4).
  6. NLH Island Power Purchases include: CBPP Co-Gen, Nalcor Exploits, Rattle Brook, Star Lake, Wind Generation and capacity assistance (when applicable).
  7. Adjusted for curtailable load, market activities and the impact of voltage reduction when applicable.

**Section 3  
Island Peak Demand Information  
Previous Day Actual Peak and Current Day Forecast Peak**

Thu, Feb 18, 2021	Actual Island Peak Demand <sup>8</sup>	18:00	1,323 MW
Fri, Feb 19, 2021	Forecast Island Peak Demand		1,430 MW

Notes: 8. Island Demand / LIL / ML Exports (where applicable) is supplied by NLH generation and purchases, plus generation owned and operated by Newfoundland Power and Corner Brook Pulp & Paper (Deer Lake Power, DLP).